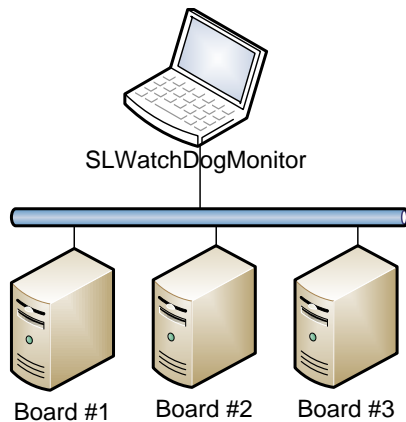


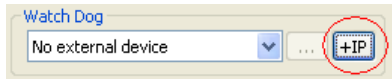
How to use "SLWatchDogMonitor"

At first, all computers must be connected by local network:

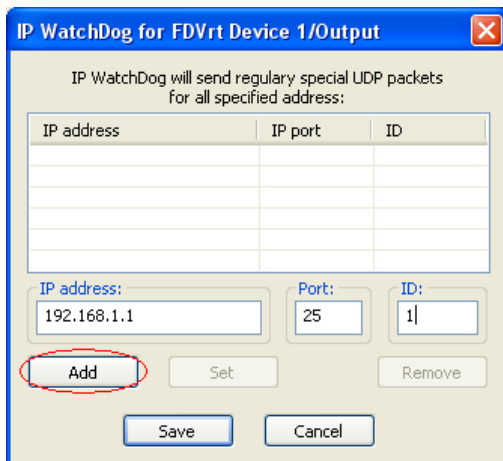


Then, you need open Port on computer with "SLWatchDogMonitor" application (or just disable FireWall). It may be any port number like 25. Lets IP for the computer is 192.168.1.1.

You have to configure IP WatchDog per every board. Just start FDConfig2 application, select board, find group "Watch Dog" and press button "+IP":



In the dialog you have to type IP address and Port of the computer with "SLWatchDogMonitor" application. Also you need type unique ID per every board, like "1" here, and press "Add":



Then press Save.

Repeat this per every board and press OK in FDConfig2. After service restart every Forward board will send "Alive" messages to specified IP address and Port.

After that you need configure "SLWatchDogMonitor" application. Unpack archive and run "SLWatchDogMonitor" application. Select menu "Settings" -> "Channel settings". Will appear dialog:



Press "+", type ID of the board and it's name (or corresponding TV channel name) and press OK.

Repeat it per every board.

Specify Port number and press OK.

Now "SLWatchDogMonitor" application will display status of playback – if FDO nAir not started or it has some problems right now then application will show Red signal. If FDO nAir works correctly then signal is Yellow or Green. Yellow means that some problems was before – just click button "v" to reset previous errors and signal will Green.